

A large, vertical photograph of the Golden Gate Bridge in San Francisco, California. The bridge's iconic red-orange towers and suspension cables are the central focus, set against a bright blue sky with scattered white clouds. The bridge spans across a body of water, with a rocky shoreline and waves visible in the foreground.

# **SECTION A**

## **Regional Group**





## Table of Contents

<b>Section A Regional Water Management Group .....</b>	<b>A-1</b>
A.1 Signatories to the Letter of Mutual Understandings.....	A-1
A.2 Roles and Responsibilities of LOMU Signatories.....	A-9
A.3 Other Stakeholders .....	A-10

## List of Tables

Table A-1: Bay Area Clean Water Agencies (BACWA) Members.....	A-3
Table A-2: Bay Area Water Supply and Conservation Agency (BAWSCA) Members.....	A-4
Table A-3: North Bay Watershed Association (NBWA) Partner Agencies .....	A-5
Table A-4: Santa Clara Basin Watershed Management Initiative (SCBWMI) Signatories.....	A-7
Table A-5: Water Management Responsibilities of LOMU Signatories .....	A-9

## List of Figures

Figure A-1: Bay Area IRWMP Organizational Chart.....	A-2
--	-----

## Acronyms Appearing in this Section

ABAG	Association of Bay Area Governments
ACWD	Alameda County Water District
BACWA	Bay Area Clean Water Agencies
BAWSCA	Bay Area Water Supply and Conservation Agency
CCC FC&WCD	Contra Costa County Flood Control and Water Conservation District
CCWD	Contra Costa Water District
EBMUD	East Bay Municipal Utility District
FADs	Functional Area Documents
IRWMP	Bay Area Integrated Regional Water Management Plan
LOMU	Letter of Mutual Understandings
MMWD	Marin Municipal Water District
MOU	Memorandum of Understanding
NBWA	North Bay Watershed Association
NPDES	National Pollutant Discharge Elimination System
POTWs	Publicly Owned Treatment Works
SCBWMI	Santa Clara Basin Watershed Management Initiative
SCC	State Coastal Conservancy
SCVWD	Santa Clara Valley Water District
SFPUC	San Francisco Public Utilities Commission
Solano CWA	Solano County Water Agency
Sonoma CWA	Sonoma County Water Agency
Zone 7	Zone 7 Water Agency



## Section A Regional Water Management Group

### ***IRWMP Appendix A Guidelines***

#### ***Section A: Regional Agency or Regional Water Management Group***

- *Describe the regional water management group or regional agency, including member agencies and organizations and their management responsibilities related to water.*
- *Demonstrate that all agencies and organizations that were necessary to address the objectives and water management strategies of the Plan were involved in the planning process.*

This section of the Bay Area Integrated Regional Water Management Plan (IRWMP) describes the associations, groups, and water management agencies responsible for developing this Plan.

### **A.1 Signatories to the Letter of Mutual Understandings**

Regional and local associations, agencies, groups, and organizations in the San Francisco Bay Area have signed a Letter of Mutual Understandings (LOMU) to develop an IRWMP for the nine-county San Francisco Bay Area (Appendix A). The signatories to this LOMU include all agencies and organizations necessary to address the objectives and water management strategies involved in the development of this IRWMP and represent a broad range of interests, including:

- Water Supply
- Water Quality
- Wastewater
- Recycled Water
- Flood Protection
- Stormwater Management
- Watershed Management
- Habitat Protection and Restoration
- Land Use Planning

Agencies and organizations in each of these interest areas were involved in the Bay Area IRWMP planning process. Figure A-1 illustrates the organization of LOMU participants in development of this IRWMP. As this figure illustrates, regulatory agencies, non-governmental organizations, environmental groups, business groups, the public and other interested parties also participated in the development of the Bay Area IRWMP serving in an advisory role to the LOMU signatories. These groups are described in Section N: *Stakeholder Involvement*. The LOMU signatories and their roles are described below.

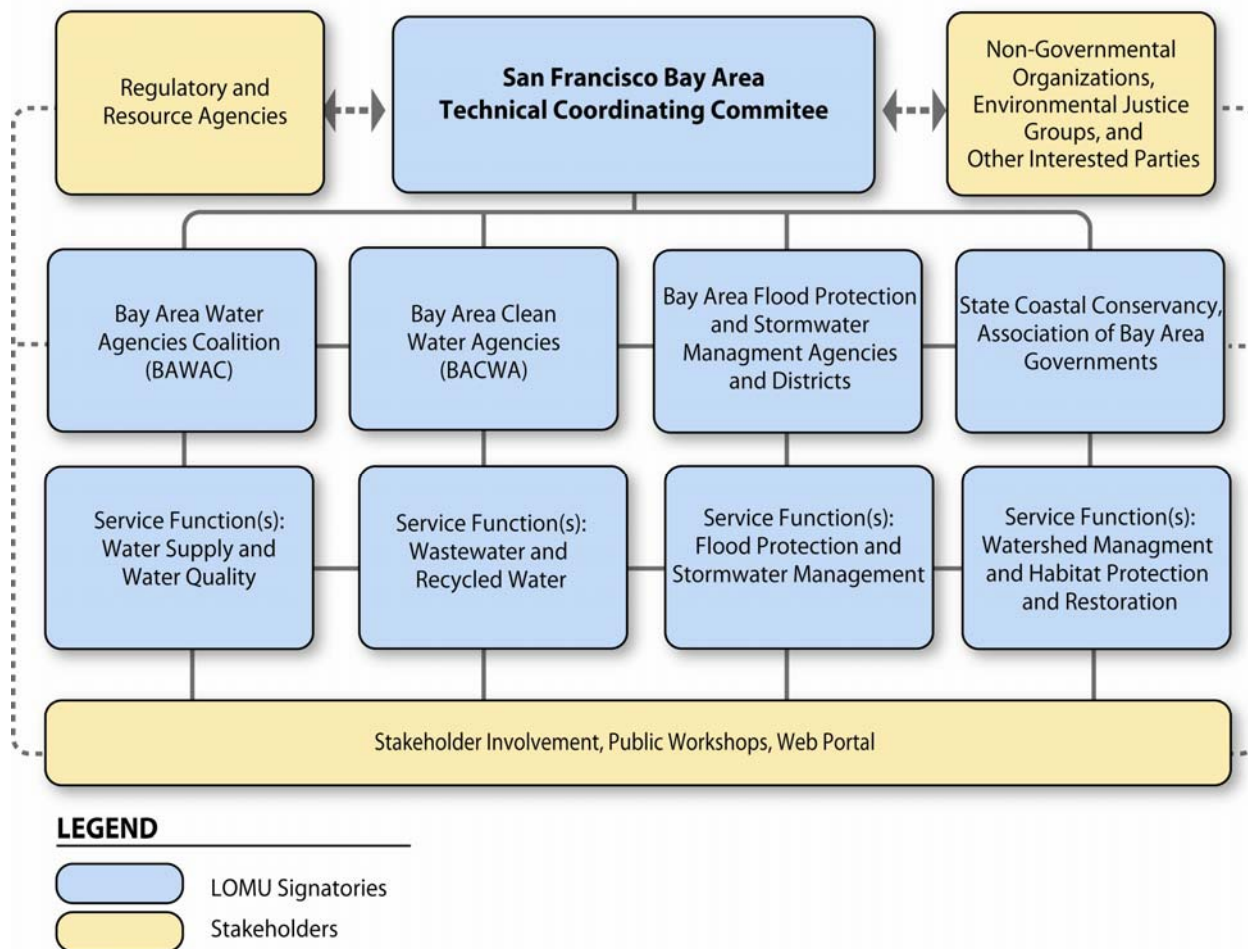


Figure A-1: Bay Area IRWMP Organizational Chart

Alameda County Water District

For more than 90 years, the Alameda County Water District (ACWD) has supplied water to the residents and businesses of southern Alameda County. Currently, ACWD is a retail water purveyor supplying drinking water to the more than 320,000 people living in the Cities of Fremont, Newark, and Union City. ACWD was the first water district in Northern California to implement brackish desalination—evidence of ACWD’s commitment to provide high quality, reliable water supplies to its customers.

Association of Bay Area Governments

The Association of Bay Area Governments (ABAG) serves as the council of governments and comprehensive planning agency for the San Francisco Bay Area. It was established in 1961 to protect local control, plan for the future, and promote cooperation on area-wide issues. ABAG’s region comprises the nine Bay Area counties—Alameda, Contra Costa, Marin, Napa, San Francisco, San Mateo, Santa Clara, Solano, and Sonoma—and the 101 cities within those counties. More than 7 million people live in this 7,000 square mile area. The members of ABAG include all nine Bay Area counties and 99 of the 101 Bay Area cities and represent nearly all of the region’s population. ABAG committees also include representatives from the Bay Conservation and Development Commission, Metropolitan Transportation Commission, Bay Area Economic Forum, San Francisco Estuary Project, and others.



### Bay Area Clean Water Agencies

The Bay Area Clean Water Agencies (BACWA) is an association comprised of local governmental agencies that operate publicly owned treatment works (POTWs) which discharge to the waters of San Francisco Bay Estuary. Together, BACWA's members serve more than 7 million people in the nine-county Bay Area, treating all domestic and commercial wastewater and a significant amount of industrial wastewater. BACWA members that are located in the San Francisco Bay Region are listed in Table A-1 below.

**Table A-1: Bay Area Clean Water Agencies (BACWA) Members<sup>1</sup>**

Public Agencies	
▪ Central Contra Costa Sanitary District	▪ City of Petaluma
▪ San Francisco Public Utilities Commission	▪ City of Piedmont
▪ City of San Jose	▪ City of Pleasanton
▪ East Bay Dischargers (City of San Leandro, Oro Loma Sanitary District, Castro Valley Sanitary District, City of Hayward, Union Sanitary District)	▪ City of Redwood City
▪ East Bay Municipal Utility District	▪ City of Richmond WPCP
▪ Central Marin Sanitation Agency	▪ City of St. Helena
▪ City of Livermore	▪ City of San Carlos
▪ City of Palo Alto	▪ Mt. View Sanitary District
▪ City of San Mateo	▪ North San Mateo Sanitation District
▪ City of Sunnyvale	▪ Novato Sanitary District
▪ Delta Diablo Sanitation District	▪ Pinole/Hercules WPCP
▪ Dublin-San Ramon Services District	▪ San Francisco International Airport
▪ Fairfield-Suisun Sewer District	▪ San Mateo County
▪ Napa Sanitation District	▪ Sanitary District of Marin County No. 1 (Ross Valley)
▪ South Bayside System Authority (South San Francisco/San Bruno WQCP, City of Belmont, City of Redwood City, City of San Carlos, West Bay Sanitary District)	▪ Sanitary District of Marin County No. 2 (Corte Madera)
▪ Vallejo Sanitation & Flood Control District	▪ Sanitary District of Marin County No. 5 (Tiburon)
▪ West County Agency	▪ Santa Clara County Sanitation District No. 2-3
▪ City of Belmont	▪ Sausalito/Marin City Sanitary District
▪ City of Benicia	▪ Sewage Agency of Southern Marin
▪ City of Brisbane Public Works	▪ Sewer Authority Mid-Coastside
▪ City of Burlingame WWTP	▪ Sonoma County Water Agency
▪ City of Fairfield	▪ Stege Sanitary District
▪ City of Millbrae	▪ Tamalpais Community Services District
	▪ Town of Yountville
	▪ West Bay Sanitary District
	▪ West Valley Sanitation District

<sup>1</sup> The Sacramento Regional County Sanitation District is also a BACWA Member, but its service area falls outside of the jurisdiction of the San Francisco Regional Water Quality Control Board (Region 2), which defines the Bay Area region for this IRWMP.



### Bay Area Water Supply and Conservation Agency

The Bay Area Water Supply and Conservation Agency (BAWSCA) represents the interests of 26 cities and water districts, and two private utilities that purchase water on a wholesale basis from the San Francisco Regional Water System. BAWSCA's goals are to ensure high-quality, reliable water supply for the 1.6 million people residing in Alameda, Santa Clara, and San Mateo Counties that depend on the SFPUC regional water system. BAWSCA's member agencies are listed in Table A-2.

**Table A-2: Bay Area Water Supply and Conservation Agency (BAWSCA) Members**

<b>Cities and Water Districts</b>	
▪ Alameda County Water District	▪ City of Millbrae
▪ City of Brisbane	▪ City of Milpitas
▪ City of Burlingame	▪ City of Mountain View
▪ Coastside County Water District	▪ North Coast County Water District
▪ City of Daly City	▪ City of Palo Alto
▪ City of East Palo Alto	▪ Purissima Hills Water District
▪ Estero Municipal Improvement District	▪ City of Redwood City
▪ Guadalupe Valley Municipal Improvement District	▪ City of San Bruno
▪ City of Hayward	▪ City of San Jose
▪ Town of Hillsborough	▪ City of Santa Clara
▪ Los Trancos County Water District	▪ Skyline County Water District
▪ City of Menlo Park	▪ City of Sunnyvale
▪ Mid-Peninsula Water District	▪ Westborough Water District
<b>Private Utilities</b>	
▪ California Water Service Company	▪ Stanford University

### Contra Costa County Flood Control and Water Conservation District

The Contra Costa County Flood Control and Water Conservation District (CCC FC&WCD) manages the flood and storm waters in city and county areas of Contra Costa County, develops flood control plans, establishes and collects development fees. CCC FC&WCD is an active partner in the Contra Costa Clean Water Program, which jointly holds a National Pollutant Discharge Elimination System (NPDES) permit containing a comprehensive plan to reduce the discharge of pollutants to the maximum extent practicable.

### Contra Costa Water District

The Contra Costa Water District (CCWD) serves approximately 500,000 people in north, central, and east Contra Costa County. CCWD acts as both a retail and wholesale water distributor, delivering treated drinking water directly to customers and both treated and untreated water to retail water agencies and major industries. Formed in 1936 to provide water for irrigation and industry, CCWD is now one of the larger urban water districts in California. It is a leader in water treatment technology and source water protection. CCWD's wholesale customers include:

- City of Antioch
- Diablo Water District
- City of Martinez
- City of Pittsburg
- Golden State Water Company



### East Bay Municipal Utility District

Formed in 1923, the East Bay Municipal Utility District (EBMUD) supplies high-quality water and provides wastewater treatment for approximately 1.3 million people in a 331 square-mile area covering parts of Alameda and Contra Costa Counties. EBMUD's comprehensive water conservation and recycling programs are a key part of its commitment to water supply reliability. In fact, EBMUD has one of the largest conservation programs in California and was one of the first water utilities in the nation to develop a conservation supply master plan.

### Marin Municipal Water District

The Marin Municipal Water District (MMWD) has been providing high-quality drinking water to residents in Marin County for nearly a century. MMWD currently serves approximately 190,000 people in a 147 square mile area of Marin County. To satisfy the demands of its water users, MMWD has been at the forefront of new water technologies, including water recycling and desalination. MMWD's mission is to provide customers with reliable, high-quality water and to ensure the fiscal and environmental vitality of its service area for future generations.

### City of Napa

The City of Napa has been providing water to its residents for more than 80 years. Today, the City of Napa manages local and imported supplies to provide safe, reliable, and high-quality water to 81,000 residents in and around the city limits. The City of Napa uses recycled water supplied by the Napa Sanitation District and has an extensive water conservation program aimed at reducing per capita demand by 10% by 2020. The City of Napa is committed to maintaining infrastructure and water supply reliability for current and future generations to maintain the unique quality of life in Napa.

### North Bay Watershed Association

The North Bay Watershed Association (NBWA) is a partnership of 15 public agencies in Marin, Sonoma, and Napa counties dedicated to facilitating projects and activities across political boundaries to promote the stewardship of the San Pablo Bay watershed. Agencies participate in the NBWA to discuss issues of common interest, explore ways to work collaboratively on water resources projects of regional concern, and share information about projects, regulations, and technical issues. The partner agencies of the NBWA are listed in Table A-3.

**Table A-3: North Bay Watershed Association (NBWA) Partner Agencies**

Public Agencies	
▪ Central Marin Sanitation Agency	▪ Novato Sanitary District
▪ County of Marin	▪ City of Petaluma
▪ Las Gallinas Valley Sanitary District	▪ City of San Rafael
▪ Marin County Sanitary District #5	▪ City of Sonoma
▪ Marin County Stormwater Pollution Prevention Program	▪ Sonoma County
▪ Marin Municipal Water District	▪ Sonoma County Water Agency
▪ Napa Sanitation District	▪ Sonoma Valley County Sanitary District
▪ North Marin Water District	▪ City of Novato (Associate Member)



### City of Palo Alto

The City of Palo Alto operates city-owned utility services that include electric, fiber optic, natural gas, water and wastewater services. The City of Palo Alto provides water supply for approximately 60,000 people living in the City of Palo Alto. Since 1962, the City of Palo Alto has received all of its potable water supply from the SFPUC. The City of Palo Alto is a member of BAWSCA, and works through BAWSCA to manage its SFPUC contract and to interact with the SFPUC. In addition to water supply, the City of Palo Alto provides wastewater and recycled water services for over 200,000 residents of Palo Alto and its surrounding areas. The Palo Alto Regional Water Quality Control Plant treats wastewater from the East Palo Alto Sanitary District, Los Altos, Los Altos Hills, Mountain View, Palo Alto, and Stanford.

### San Francisco Public Utilities Commission

SFPUC owns and operates a regional water system that provides and delivers water to 28 wholesale customers and its retail customers. SFPUC also provides wastewater service and municipal power to the City and County of San Francisco. SFPUC serves the approximately 775,000 residents of San Francisco, as well as about 1.65 million residents of Santa Clara, Alameda, and San Mateo Counties. Currently, SFPUC is implementing an extensive capital improvement program to repair, replace, and seismically upgrade the water system's aging infrastructure to ensure reliable delivery of its water supply. BAWSCA member agencies that are listed under the BAWSCA section of this document are SFPUC regional system wholesale customers and are served in part or wholly by the SFPUC regional system.

### City of San Jose

The City of San Jose's Environmental Services Department provides drinking water supply, wastewater treatment, water pollution prevention, and recycled water supply services to local residents. Created in 1961, the San Jose Municipal Water System serves four different neighborhoods in the City of San Jose: North San Jose/Alviso, Evergreen, Edenvale and Coyote. The San Jose/Santa Clara Water Pollution Control Plant is one of the largest advanced wastewater treatment facilities in California. It treats and cleans the wastewater of over 1,500,000 people that live and work in the 300-square mile area encompassing San Jose, Santa Clara, Milpitas, Campbell, Cupertino, Los Gatos, Saratoga, and Monte Sereno. About 10% of the treated water is recycled through South Bay Water Recycling pipelines for landscaping, agricultural irrigation, and industrial needs around the South Bay.

### Santa Clara Basin Watershed Management Initiative

The Santa Clara Basin Watershed Management Initiative (SCBWMI) was formed in 1996 as a collaborative effort of representatives from Santa Clara County and South Bay. Its members include representatives from:

- Businesses and industrial sectors
- Professional and trade organizations
- Civic, environmental, resource conservation, and agricultural groups
- Regional and local public agencies
- General public

The SCBWMI addresses issues in water rights and water supply reliability, flood management, regulatory compliance, land use, and public awareness and involvement. A list of member organizations who have signed the SCBWMI Signatory Document is presented in Table A-4.



**Table A-4: Santa Clara Basin Watershed Management Initiative (SCBWMI) Signatories**

Public Agencies	
<ul style="list-style-type: none"> <li>▪ California Department of Fish &amp; Game</li> <li>▪ City of Cupertino</li> <li>▪ City of Palo Alto</li> <li>▪ City of San Jose</li> <li>▪ City of Santa Clara</li> <li>▪ City of Sunnyvale</li> <li>▪ Guadalupe-Coyote Resource Conservation District</li> <li>▪ San Francisco Bay Regional Water Quality Control Board</li> <li>▪ San Francisquito Creek Joint Powers Authority</li> </ul>	<ul style="list-style-type: none"> <li>▪ Santa Clara County</li> <li>▪ Santa Clara County Open Space Authority</li> <li>▪ Santa Clara Valley Transportation Authority</li> <li>▪ Santa Clara Valley Urban Runoff Pollution Prevention Program</li> <li>▪ Santa Clara Valley Water District</li> <li>▪ US Army Corps of Engineers</li> <li>▪ US Environmental Protection Agency</li> <li>▪ USDA Natural Resource Conservation Service</li> </ul>
Business and Trade Associations	
<ul style="list-style-type: none"> <li>▪ California Restaurant Association/Dairy Belle Freeze</li> <li>▪ Home Builders Association of Northern California</li> <li>▪ San Jose Silicon Valley Chamber of Commerce</li> </ul>	<ul style="list-style-type: none"> <li>▪ Santa Clara Cattlemen's Association</li> <li>▪ Santa Clara County Farm Bureau</li> <li>▪ Silicon Valley Manufacturing Group</li> </ul>
Environmental and Civic Groups	
<ul style="list-style-type: none"> <li>▪ CLEAN South Bay</li> <li>▪ Greenbelt Alliance</li> <li>▪ Leagues of Women Voters of Santa Clara County</li> <li>▪ Salmon and Steelhead Restoration Group</li> <li>▪ San Francisco Bay Bird Observatory</li> </ul>	<ul style="list-style-type: none"> <li>▪ San Francisquito Watershed Council</li> <li>▪ Santa Clara Valley Audubon Society</li> <li>▪ Sierra Club Loma Prieta Chapter</li> <li>▪ Silicon Valley Toxics Coalition</li> <li>▪ Stevens and Permanente Creeks Watershed Council</li> <li>▪ Western Waters Canoe Club</li> </ul>

### Santa Clara Valley Water District

The Santa Clara Valley Water District (SCVWD) manages wholesale drinking water resources for Santa Clara County and provides stewardship for the county's vast watersheds, including its reservoirs, groundwater basins, and over 700 miles of streams. The SCVWD encompasses all of the county's 1,300 square miles and serves the area's 15 cities, 1.7 million residents, and more than 200,000 commuters. SCVWD continues to be a leader in water resources management with award-winning programs that are innovative and comprehensive. SCVWD works to protect the environmental balance of riparian corridors while maximizing flood protection and water supply benefits, as well as recreational opportunities, within its jurisdiction. SCVWD provides a reliable supply of high-quality water to private and public water retailers, which are listed below.

- California Water Service Company
- Gilroy Community Services Department
- Great Oaks Water Company
- City of Milpitas Community Services
- City of Morgan Hill Public Works Department
- City of Mountain View Public Services Department
- San Jose Municipal Water System
- San Jose Water Company
- City of Santa Clara Water Department
- City of Sunnyvale Public Works Department



Although the City of Palo Alto and Purissima Hills Water District are located within the County of Santa Clara and SCVWD's service area, most of the current water supply to these two agencies are from SFPUC. Both agencies, however, benefit from the comprehensive water management programs and services provided by SCVWD.

### Solano County Water Agency

Formed in 1951, the Solano County Water Agency (Solano CWA) provides water supply and flood control services for cities and irrigation districts in Solano County and parts of Yolo County. Solano CWA leads efforts to protect rights to existing sources of water and works to secure new sources of water for water supply reliability and future growth. In addition to its irrigation customers, Solano CWA delivers untreated water to its wholesale customers, who serve more than 400,000 residents. These wholesale customers include:

- City of Benicia
- City of Fairfield
- Maine Prairie Water District
- Solano Irrigation District
- City of Suisun City
- City of Vacaville
- City of Vallejo

### Sonoma County Water Agency

Created in 1949, the Sonoma County Water Agency (Sonoma CWA) is a water wholesaler that provides drinking water to approximately 570,000 residents of Sonoma and Marin counties. In addition, Sonoma CWA provides sanitation and flood control services to residents of Sonoma County. Sonoma CWA is a regional leader in water resources management and was the first retail group in the state to sign the California Urban Water Conservation Council's memorandum of understanding (MOU). Sonoma CWA's prime contractors include:

- City of Cotati
- City of Petaluma
- City of Rohnert Park
- City of Santa Rosa
- City of Sonoma
- Town of Windsor
- North Marin Water District
- Valley of the Moon Water District

Other wholesale customers include Forestville Water District and MMWD.

### State Coastal Conservancy

The State Coastal Conservancy (SCC), established in 1976, is a non-regulatory state agency that employs innovative approaches to purchase, protect, restore, and enhance coastal resources, and to provide access to the shore. The legislature created the SCC as a unique entity with flexible powers to serve as an intermediary among governmental agencies, non-governmental organizations, citizens, and the private sector in recognition that creative approaches would be needed to preserve California's coast and San Francisco Bay lands for future generations. The San Francisco Bay Area Conservancy Program,



administered by the SCC, was established in 1998 to address the natural resource and recreational goals of the nine-county Bay Area in a coordinated and comprehensive way.

### Zone 7 Water Agency

The Zone 7 Water Agency (Zone 7) was formed in 1957 to manage groundwater, flood control, and water supplies for the Livermore-Amador Valley. Zone 7's service area includes the Cities of Dublin, Livermore, Pleasanton, and the surrounding unincorporated areas, providing roughly 180,000 residents with a reliable supply of high quality water. By pursuing multiple water supply strategies and state-of-the-art technologies, Zone 7 is committed to ensuring the needs of its customers are met, even in times of drought. Zone 7's wholesale customers include:

- Dublin San Ramon Services District
- City of Pleasanton
- City of Livermore
- California Water Service Company

## **A.2 Roles and Responsibilities of LOMU Signatories**

The major agencies with water management authority within the Bay Area are signatories to the LOMU. They represent the interests of all four functional areas related to water management that are identified in the LOMU and that are integrated in this IRWMP. These functional areas are (1) Water Supply and Water Quality, (2) Wastewater and Recycled Water, (3) Flood Protection and Stormwater Management, and (4) Watershed Management, Habitat Protection and Restoration. The management responsibilities of each participating agency are summarized in Table A-5, below.

**Table A-5: Water Management Responsibilities of LOMU Signatories**

	Water Supply / Water Quality	Wastewater	Recycled Water	Flood Protection / Storm Water	Watershed / Habitat Protection	Land Use
Alameda County Water District	✓				✓	
Association of Bay Area Governments						✓
Bay Area Clean Water Agencies		✓	✓		✓	
Bay Area Water Supply and Conservation Agency <sup>a</sup>	✓					
Contra Costa County Flood Control and Water Conservation District				✓		✓
Contra Costa Water District	✓				✓	
East Bay Municipal Utility District	✓	✓	✓		✓	
Marin Municipal Water District	✓		✓		✓	
City of Napa	✓			✓	✓	✓



	Water Supply / Water Quality	Wastewater	Recycled Water	Flood Protection / Storm Water	Watershed / Habitat Protection	Land Use
North Bay Watershed Association					✓	
City of Palo Alto	✓	✓	✓	✓		✓
San Francisco Public Utilities Commission	✓	✓	✓	✓	✓	
City of San Jose	✓	✓	✓	✓		✓
Santa Clara Basin Watershed Management Initiative					✓	
Santa Clara Valley Water District	✓		✓ <sup>b</sup>	✓	✓	
Solano County Water Agency	✓		✓ <sup>b</sup>	✓	✓	
Sonoma County Water Agency	✓	✓	✓	✓	✓	
State Coastal Conservancy <sup>c</sup>					✓	
Zone 7 Water Agency	✓			✓	✓	

## Notes:

- a. BAWSCA member agencies include the SFPUC regional system customers and are served in part or wholly by the SFPUC regional system.
- b. Although SCVWD and Solano CWA do not have wastewater responsibilities, they are active participants in recycled water activities in their jurisdiction.
- c. The State Coastal Conservancy's role with respect to watersheds and habitat is to assist with protecting and restoring fish and wildlife habitat and to provide compatible public access.

### A.3 Other Stakeholders

In addition to the LOMU signatories, many other organizations and agencies with roles in water resources planning and/or management in the Bay Area have participated in development of the functional area documents (FADs) and/or the IRWMP through attendance at public workshops and review of draft sections.

Section N: *Stakeholder Involvement* describes these stakeholders and details the outreach and communication activities undertaken for the IRWMP.

Section O: *Coordination* describes the coordination with the following state and federal agencies in development of this Plan: State Coastal Conservancy, California Department of Water Resources, State Water Resources Control Board, San Francisco Regional Water Quality Control Board, CALFED, San Francisco Bay Conservation and Development Commission, California Resources Agency, U.S. Fish and Wildlife Service, U.S. Environmental Protection Agency, U.S. Army Corps of Engineers, NOAA's National Marine Fisheries Service, California Environmental Protection Agency, California Department of Fish and Game, and the California Department of Transportation.