



Bay Area Integrated Regional Water Management Plan

Stakeholder Workshop #4
October 23, 2006

*Working together to enhance sustainable water
resources management to support a high quality
of life in the Bay Area.*



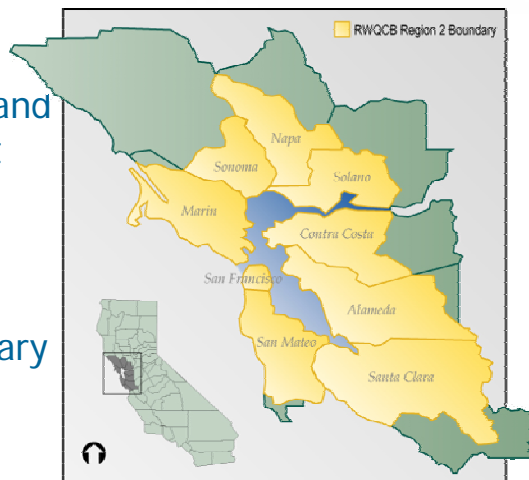
Agenda

1. Overview of Plan Development Process
2. Update on Activities since Workshop #3
3. IRWMP Plan Sections H-O
4. Proposed Implementation Approach
5. Comments on Public Draft IRWMP
6. Next Steps

1. Overview of Plan Development Process

Overview of Bay Area IRWMP

- IRWMP is an ongoing process and a living document
- Boundaries: RWQCB Region 2
- Timeline: Adoption by January 1, 2007



IRWMP Based On 4 Functional Areas

- Water Supply-
Water Quality
- Wastewater-
Recycled Water
- Flood Protection-
Stormwater Mgmt
- Watershed Mngmt-
Habitat Protection &
Restoration



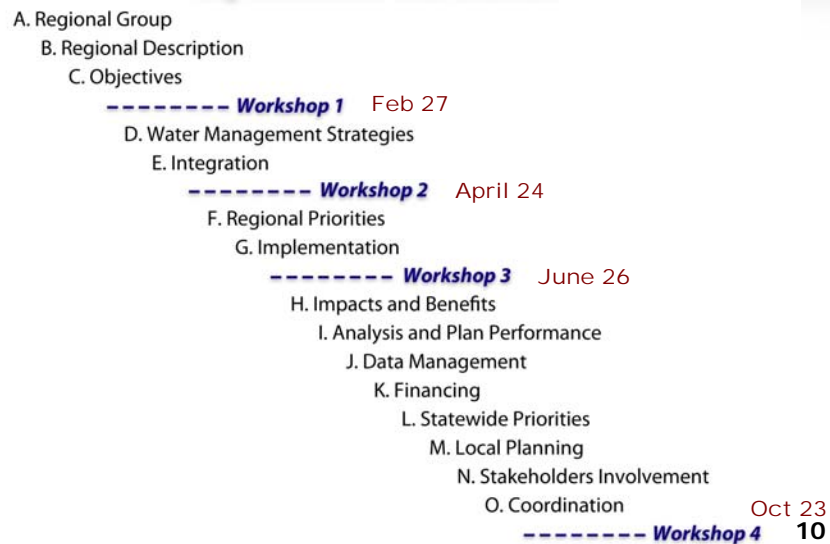
Functional Areas Support IRWMP by:

- Documenting existing programs and plans
- Identifying regional issues and challenges
- Establishing regional objectives
- Determining project priorities

Functional Area Successes

- Planning process has generated tremendous momentum relative to the 4 Functional Areas
- Functional Areas work together to identify projects with regional, cross-functional benefits

IRWMP Plan Development



IRWMP Plan Development

- A. Regional Group
- B. Regional Description
- C. Objectives

----- **Workshop 1**

Bay Area IRWMP Regional Goals:

- Promote Economic, Social & Environmental Sustainability
- Improve Supply Reliability
- Protect & Improve Hydrologic Function
- Protect & Improve Water Quality
- Protect & Enhance Environmental Resources & Habitats
- Protect Public Health, Safety & Property



11

IRWMP Plan Development

- A. Regional Group
- B. Regional Description
- C. Objectives

----- **Workshop 1**

- D. Water Management Strategies
- E. Integration

----- **Workshop 2**

Integration of Water Management Strategies:

- Organizational Benefits
- Geographic Benefits
- Synergistic Benefits
- Financial Benefits



12

IRWMP Plan Development

- A. Regional Group
- B. Regional Description
- C. Objectives

----- **Workshop 1**

- D. Water Management Strategies
- E. Integration

----- **Workshop 2**

- F. Regional Priorities
- G. Implementation

----- **Workshop 3**

Project Prioritization Criteria:

- Bay Area IRWMP Regional Goals
- Bay Area IRWMP Other Criteria
- Statewide Priorities
- Program Preferences



Table ES-6: Project Assessment Results

Projects	Bay Area IRWMP Regional Goals							Bay Area Regional Assessment Criteria					Prog. B1 Program Preferences					Prog. B1 Statewide Priorities					
	Water Quality	Water Quantity	Water Quality	Water Quantity	Water Quality	Water Quantity	Water Quality	Water Quantity	Water Quality	Water Quantity	Water Quality	Water Quantity	Water Quality	Water Quantity	Water Quality	Water Quantity	Water Quality	Water Quantity	Water Quality	Water Quantity	Water Quality	Water Quantity	
1. Alameda Bridge-Land Reuse																							
2. Alameda County Water Reclamation Plant																							
3. Alameda County Water Reclamation Plant																							
4. Alameda County Water Reclamation Plant																							
5. Alameda County Water Reclamation Plant																							
6. Alameda County Water Reclamation Plant																							
7. Alameda County Water Reclamation Plant																							
8. Alameda County Water Reclamation Plant																							
9. Alameda County Water Reclamation Plant																							
10. Alameda County Water Reclamation Plant																							
11. Alameda County Water Reclamation Plant																							
12. Alameda County Water Reclamation Plant																							
13. Alameda County Water Reclamation Plant																							
14. Alameda County Water Reclamation Plant																							
15. Alameda County Water Reclamation Plant																							
16. Alameda County Water Reclamation Plant																							
17. Alameda County Water Reclamation Plant																							
18. Alameda County Water Reclamation Plant																							
19. Alameda County Water Reclamation Plant																							
20. Alameda County Water Reclamation Plant																							
21. Alameda County Water Reclamation Plant																							



2. Update on Activities since June 26th Workshop

Based on Feedback from Workshop #3

- Revised prioritization criteria:
 - Regionalism
 - Partnerships
 - Integration
- Revised project assessments based on feedback

Regional Goals

Regional Criteria

Program Preferences

Statewide Priorities

Outreach to Local Governments

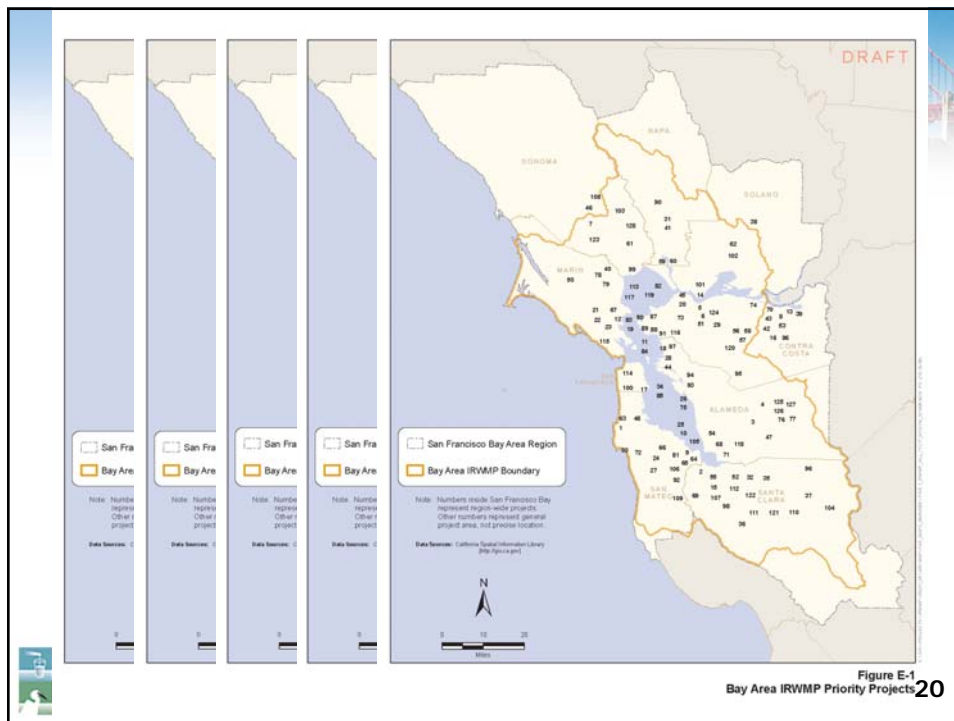
- Seven local government briefings held throughout the region
- Aimed at local land use decision-makers
- Described the IRWMP process and Plan development
- Encouraged submission of projects

Progress Updates

- Bay Area Water Forum
 - Institutional structure
- ABAG Regional Planning Committee
 - Fiscal impacts of Plan implementation
 - Grant application process
 - Local government involvement

Extended Call for Projects

- Open call for projects for the IRWMP closed on September 1, 2006
 - 13 projects added as IRWMP priorities
- Total priority list now includes 116 projects
 - 38 water supply-water quality
 - 31 wastewater-recycled water
 - 34 flood protection-stormwater management
 - 46 watershed management-habitat protection





Gathered Project Implementation Data

- Status and schedule
- Feasibility and technical studies
- Capital and O&M costs
- Impacts and benefits
- Stakeholder involvement



3. IRWMP Plan Sections

IRWMP Plan Development

- A. Regional Group
- B. Regional Description
- C. Objectives
 - **Workshop 1**
 - D. Water Management Strategies
 - E. Integration
 - **Workshop 2**
 - F. Regional Priorities
 - G. Implementation
 - **Workshop 3**
 - H. Impacts and Benefits
 - I. Analysis and Plan Performance
 - J. Data Management
 - K. Financing
 - L. Statewide Priorities
 - M. Local Planning
 - N. Stakeholders Involvement
 - O. Coordination
 - **Workshop 4**



H. Impacts & Benefits

- IRWMP consists of a planning study and basic data collection
 - Assesses impacts and benefits typically associated with broad water resource management strategies
 - Most projects have not undergone CEQA analysis needed to identify project-specific impacts and benefits



I. Technical Analysis & Plan Performance

- Project Level –
 - Project proponents monitor and report on project progress.
- Functional Area –
 - TCCs collect project performance information, assess performance, and adjust priorities as needed.
- Plan Level –
 - IRWMP CC compiles information from Functional Areas, assesses Plan performance, and adjusts IRWMP priorities as needed.

J. Data Management

- Data maintained in library on the IRWMP website
- Data compatible with statewide data collection programs
 - Surface Water Ambient Monitoring Program (SWAMP)
 - Groundwater Ambient Monitoring & Assessment (GAMA)
- Data sent to statewide data programs
 - Ca Environmental Resources Evaluation System (CERES)
 - Ca Environmental Data Exchange Network (CEDEN)

K. Financing

- Estimated capital cost of 116 near-term priority projects = \$2.1 Billion.
- Successful IRWMP requires on-going financing for:
 - Project O&M
 - Plan administration

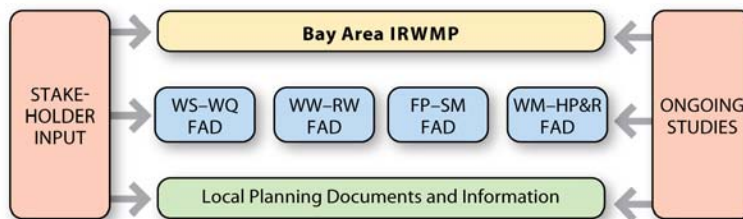
L. Statewide Priorities

IRWMP contributions to:

- Reduce conflict between water rights users
- Implement TMDLs
- Implement RWQCB Watershed Management Initiatives
- Implement SWRCB's NPS Pollution Plan
- Assist in meeting Delta Water Quality Objectives
- Implement recommendations of the floodplain management task force, desalination task force, recycling task force, or state species recovery plan
- Address environmental justice concerns
- Assist in achieving goals of CALFED Bay-Delta Program

M. Local Planning

- IRWMP is based upon data analysis in local planning documents
- Coordination with local governments through ABAG and briefings



N. Stakeholder Involvement

- Stakeholder workshops
- Email database
- Local government briefings
- Bay Area Water Forum presentations
- ABAG Regional Planning Committee updates
- TCC-member Board presentations
- www.BayAreaIRWMP.net



BayArea
Integrated Regional Water Management Plan

HOME LIBRARY CALENDAR MAPS

Welcome

The Bay Area Integrated Regional Water Management Plan is a nine-county regional effort to coordinate and improve water supply reliability, protect water quality, manage flood protection, maintain public health standards, protect habitat and watershed resources, and enhance the overall health of the Bay.

IRWMP GRANT PROGRAM

FREQUENTLY ASKED QUESTIONS
Who is involved?
How is the region defined?
What is the schedule?

STAKEHOLDER WORKSHOPS

FUNCTIONAL AREA DOCUMENTS
Water Supply & Water Quality
Wastewater & Recycled Water
Flood Protection & Stormwater Management
Bay Area Watershed Plan

BAY AREA IRWMP DOCUMENT
IRWMP Chapters

FEATURES

Who is involved in the Bay Area IRWMP?
Development of the Bay Area IRWMP involves a diverse group of water supply, water quality, wastewater, stormwater, flood management, watershed and habitat agencies, local governments, environmental groups, business groups and other interested parties... [Learn more...](#)

What are the Functional Area Documents (FADs)?
The FADs are four separate documents that have been prepared to address the region's water resources: 1) Water Supply & Water Quality; 2) Wastewater & Recycled Water; 3) Flood Protection & Stormwater Management; and 4) Bay Area Watershed Plan. [Learn more...](#)

Join us for Bay Area IRWMP Workshop #2!
Workshop 2 will involve discussion of the Plan vision, goals, and objectives, as well as potential water management strategies that were developed in each of the functional area documents...

Find out more about the Bay Area IRWMP!

31

O. Coordination with Agencies

State and Federal agencies role in IRWMP development:

- Participation in stakeholder workshops
- Review of Admin Draft materials
- Participation in TCC meetings

32

O. Coordination with Agencies

- Bay Area Air Quality Management District
- CALFED
- Ca Dept of Fish and Game
- Ca Dept of Forestry and Fire Protection
- Ca Dept of Health Services
- Ca Dept of Water Resources
- Ca Farm Bureau
- Ca Resources Agency
- Ca State Lands Commission
- Ca State Parks
- Ca State Coastal Conservancy
- Caltrans
- Corps of Engineers
- Metropolitan Transportation Commission
- National Park Service
- NOAA National Marine Fisheries Service
- Regional Water Quality Control Board
- State Water Resources Control Board
- US Fish and Wildlife Service
- US EPA

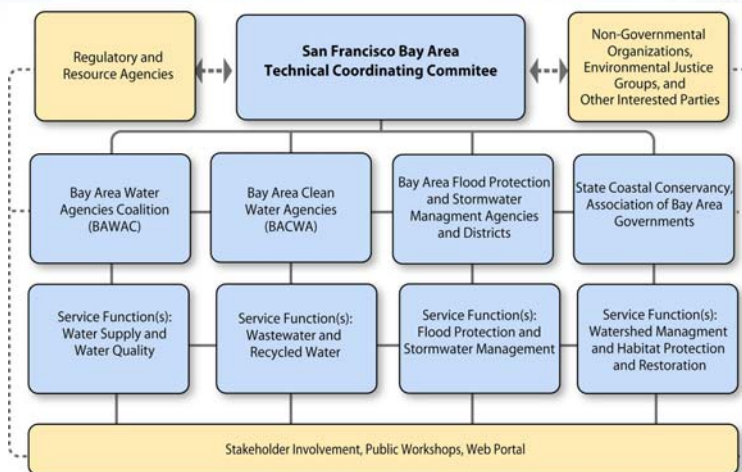
4. Proposed Implementation Approach

- Institutional structure
- Responsibilities
- Ongoing stakeholder outreach

Issues Considered in Plan Development

- Quantifiable regional objectives vs. individual agency objectives
- Institutional structure during planning vs. implementation
- Reporting progress vs. availability of funding and resources
- Qualitative vs. quantitative project assessment

IRWMP TCC Structure





Demonstrated Success In Plan Development Phase

- IRWMP TCC has worked together to reach consensus, despite challenges:
 - large geographic scope of the region,
 - diverse water resource management interests, and
 - short timeframe for Plan development.



Proposed Institutional Structure

- Now through January 1, 2007
 - Continuation of IRWMP TCC through Plan adoption process
- Beyond January 1, 2007
 - Reconstitute TCC as IRWMP CC to guide Plan implementation
 - Conduct review of long-term organizational structure no later than March 31, 2007
 - Create a formal entity or successor, as needed

Institutional Structure

Near-Term Period

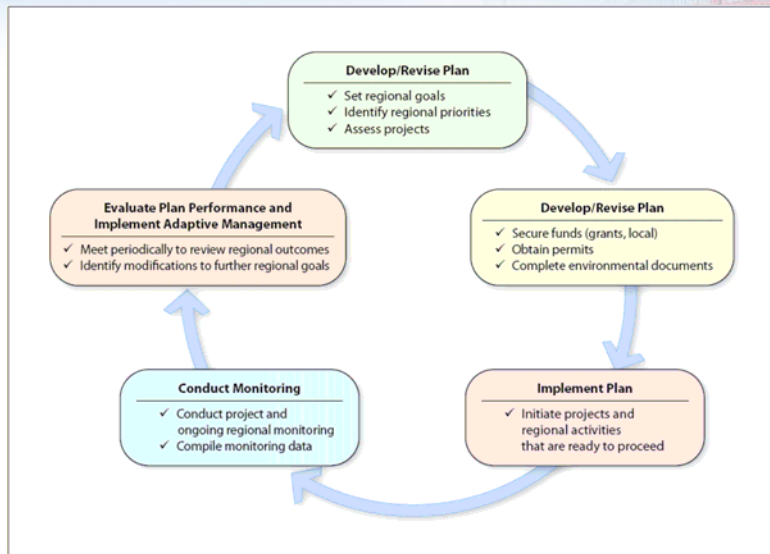
- Regional communication & coordination
- Oversee Plan implementation
- Decision-making
- Assess project and Plan performance
- Prepare quarterly and annual reports
- Adjust priorities as needed
- Implement projects

Institutional Structure

Long Term

- Regional communication & coordination
- Oversee Plan implementation
- Decision-making
- Assess project and Plan performance
- Prepare quarterly and annual reports
- Adjust priorities as needed
- Prepare Prop 50 grant applications
- Administer funding distribution
- Implement projects

Implementation & Performance



Ongoing Stakeholder Involvement

- Continued outreach to regulatory agencies, local governments, environmental justice groups, and interested parties
- Periodic release of “regional outlook” on IRWMP Plan performance
- ***www.BayAreaIRWMP.net***





5. Comments on Public Draft IRWMP

*Note: All comments and responses will be included
in an appendix in the Final Draft.*



Comments Received From:

- City of Benicia
- City of Palo Alto
- City of San Jose
- Clean Water Action (CWA)
- Environmental Justice Coalition for Water (EJCW)
- North Bay Watershed Association (NBWA)
- Solano County Water Agency
- Sonoma Ecology Center

Types of Comments Received

1. Editorial comments that can be incorporated into Final IRWMP now
2. Direct informational comments that can be incorporated into future Plan updates
3. Comments that require policy-level decisions by IRWMP CC (or State)
4. Comments that require separate planning studies

1. Editorial Comments

- Updates to project information
- Minor editing comments on text, maps, and figures
- Simple edits/additions to improve clarity and content
 - Water management strategy examples
 - Fiscal impact of IRWMP projects

2. Direct Informational Comments

- Maps and figures
 - Additional spatial analysis (map overlays)
 - More detailed mapping by sub-region
- Additional data collection
 - Economic trends, demographics, water use
 - Type and age of infrastructure
- Assessment of project gaps

3. Comments Requiring Policy Decisions

- Long term TCC governance structure
- Next implementation grant process
- Future revisions to project assessment criteria
- Quantitative goals and performance measures
- Soliciting and submitting new projects
- Details on stakeholder engagement process
- Questions on how to include impact analysis within IRWMP process



4. Comments Requiring Other Planning Studies

- Comparative analysis of desalination vs. conservation
- Mapping of environmental stressors (non-water related)
- Analysis of impacts on DA/EJ communities from future rate increases
- Project level impacts and benefits
- Analysis of cumulative environmental impacts



Additional Public Comments?



6. Next Steps



Next Steps

- Public feedback and revisions on Public Draft IRWMP (due by Oct 24th)
- Final Draft IRWMP released (Nov 1st)
- Plan adoption and submittal (Nov-Dec)

Plan Adoption

- Board and Commission deliberations scheduled to begin in November 2006*

** Provided the public review process proceeds as planned and comments can be addressed in the scheduled timeframe*

Key Issues for Future Updates

- Key issues for Plan governance:
 - Precise form of long-term institutional structure
 - How Plan performance will be measured
 - How frequently to report progress and update Plan
- IRWMP implementation contains offramps to ensure Boards and Commissions do not commit themselves to actions they are not fully prepared to take



Other Funding Opportunities

- Propositions 50 and 84
- Other?



Bay Area Integrated Regional Water Management Plan

Stakeholder Workshop #4
October 23, 2006

*Working together to enhance sustainable water
resources management to support a high quality
of life in the Bay Area.*